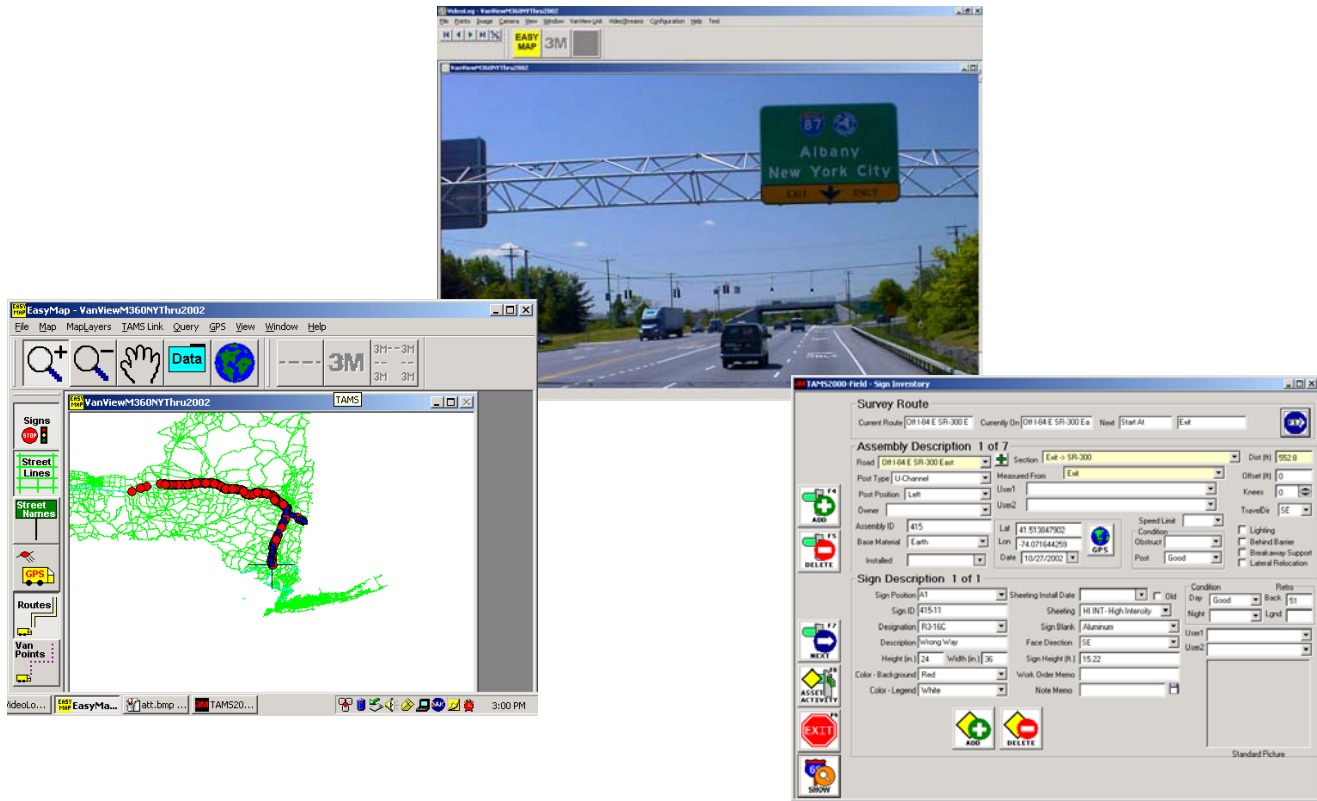


## NYS Thruway Sign Management System



**Client:** Minnesota Mining & Manufacturing (3M Company)

**Owner:** New York State Thruway Authority

**Project Location:** Albany, NY

GPI teamed with 3M Company and Facet Technology Corporation to provide the New York State Thruway Authority with an inventory and computerized management system for all signs along 641-miles of the statewide superhighway network. The inventory was performed utilizing van-based video technology and utilized 3M's TAMS application as the management system. GPI completed the field condition assessment for 18,000 signs that included confirmation of automated data extraction results, visual determination of sign and support conditions, and measurement of sign retroreflective properties. GPI received specialized training from 3M in the use of the management system, related field data collection techniques and use of reflectometer equipment used to measure the reflective properties of sheeting material.