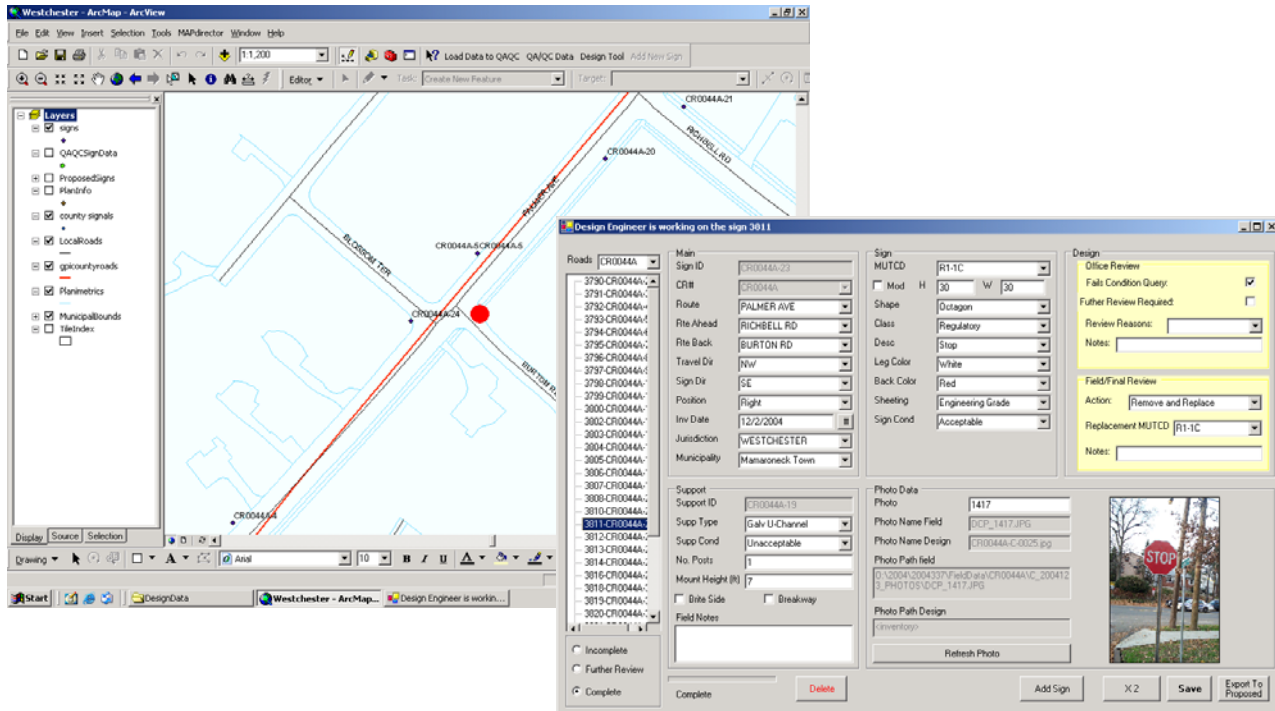


## Westchester County Traffic Sign Replacement Program



**Client/Owner:** Westchester County Dept. of Public Works

**Project Location:** White Plains, NY

GPI initially developed a Sign Management System for signs along the Bronx River Parkway in a pilot project using a commercial off the shelf application. After successful testing and implementation, Westchester County contracted with GPI to expand the system to include all 8,000 County-owned traffic signs along their 170-mile-long roadway network, to develop a custom application and to migrate from the commercial product to the stand-alone system. The project included the field inventory of all the signs, development of construction documents for sign replacement and construction coordination services for replacement of traffic signs. The project was coordinated with the Westchester County Department of Information Technology's GIS Division. The field inventory of existing signs utilizing GPS technology and utilized the data to develop construction documents for sign replacement. The construction document preparation included an automated condition review for all signs, manual review of all signs for conformance to State and Federal requirements and development of construction drawings to replace signs that did not meet minimum requirements. Additional services for this ongoing project include providing assistance during the bid phase, design support as necessary during construction, preparation of custom reporting functions and staff training. GPI also provided program management assistance to coordinate sign replacement costs and programmed budgets. Due to funding considerations the sign replacement effort was divided into two construction contracts, the first of which is currently under way. GPI will provide construction management services for the first contract to include field inspection of sign replacements, confirmation of updated field data and all associated administrative tasks. At the conclusion of construction, GPI will update the database as necessary for new sign installations, deliver the final management system, provide ongoing technical support to the County and provide support services for the second sign replacement contract.