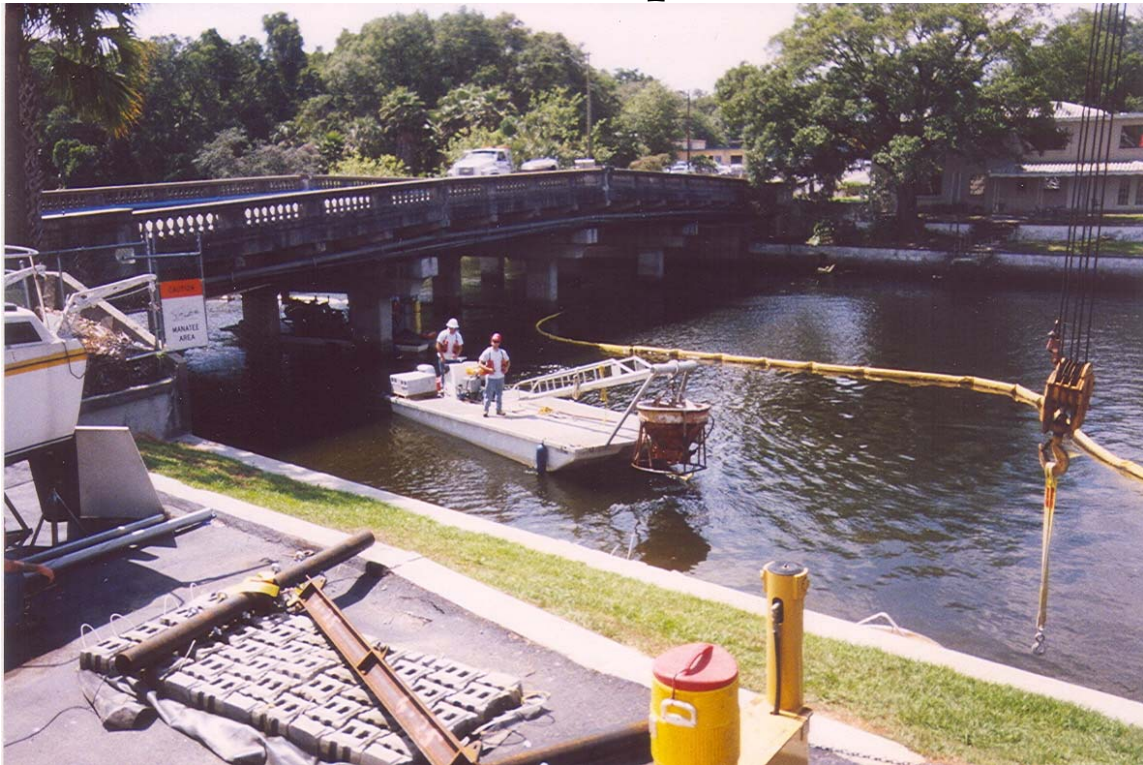

CEM Enterprises, Inc.

Scour Repair

GPI



Marine Construction/Scour Repair

Client/Owner: CEM Enterprise, Inc/ FL DOT
Project Location: Hillsborough River

Hillsborough River Scour Repair - Placement of articulating block mats and filter fabric in 0 - 15' of water at 2 Tampa area bridges over the Hillsborough River. Additional work items included debris removal and installing floating turbidity barrier. Difficulties included low overhead, poor access to the majority of the work site, working next to designated wetlands area, & poor visibility. Work was for scour countermeasures.