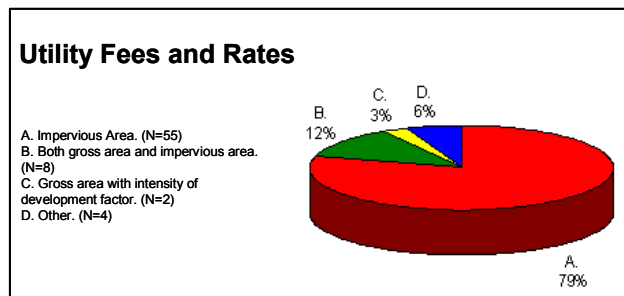
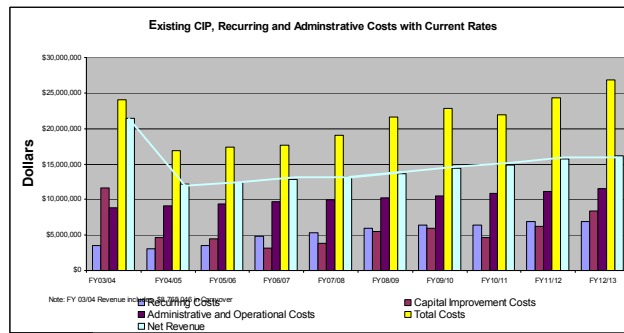
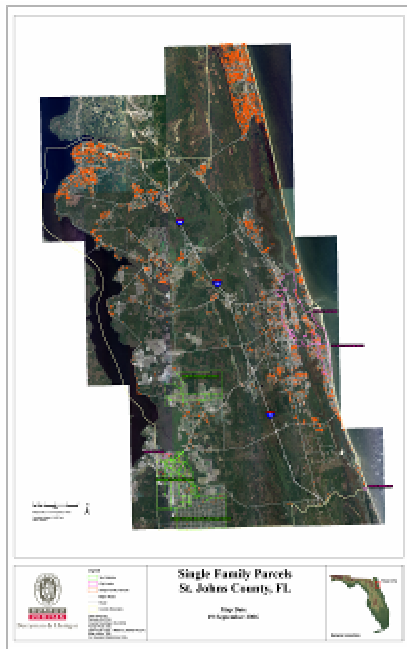


St. Johns County Stormwater Utility Study



Client/Owner: St. Johns County
Project Location: St. Johns County, Florida

St. Johns County covers an area of approximately 670 square miles (unincorporated area). A Countywide Drainage Study Update was completed in September 2004, which resulted in recommendations for maintenance projects, drainage studies, design projects, and modeling standardization. The projects proposed through the study resulted in proposed Capital Improvement Project budgets of over \$4 million for FY 2006, over \$15 million for FY 2007-2010, and additional candidate projects estimated to cost over \$6 million. Other anticipated costs can be attributed to stormwater and NPDES-related issues such as: MS4 operation and maintenance; Total Maximum Daily Load Basin Management Plan development; continued MS4 permit compliance efforts; watershed modeling and planning needs; water quality improvement project planning, design, and construction; and matching funds for outside funding opportunities. The St. Johns County BOCC passed Ordinance 94-16, the “St. Johns County Stormwater Management Utility”; however a rate has never been applied or assessed. Therefore, the County currently does not have a specific funding source to fund stormwater management operations. GPI conducted a Stormwater Utility Study to develop a rate structure to be applied through a legally defensible and serviceable ordinance. GPI’s work in Phase I of the St. Johns County Stormwater Utility Rate Study focused on:

- Legal review;
- Data collection;
- Customer identification;
- Revenue requirements;
- 5-year financial planning;
- Comparative rate survey and analysis; and a
- BOCC Workshop.