



MultiVision

Law Enforcement

"Oblique Imagery
on Demand..."™

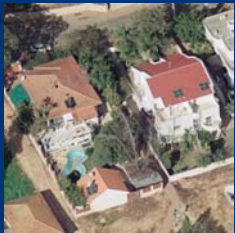
The solution for situational assessment while on the move...™



Image Acquisition



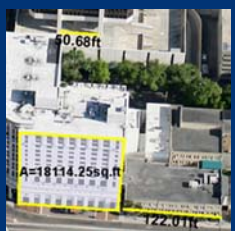
3D Modeling



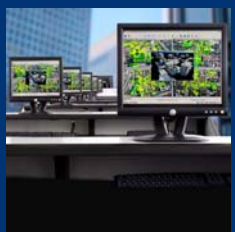
Oblique



GIS



Evaluation



Integration

MultiVision is a new, more advanced Oblique Imagery Database that provides you multidimensional viewing at your fingertips. With MultiVision, law enforcement officers and first responders can assess a situation before they arrive.

Using MultiVision's *high-resolution* oblique aerial imagery you have quick access to visual information, helping you find the best route to the scene, or make tactical placement decisions. MultiVision offers an advantageous perspective that may be utilized for special operations surveillance, suspect search, and SWAT support. Other uses include useful for accident reconstruction, increasing officer safety, and decreasing road-closure time.



Use MultiVision to assist in preplanning the execution of raids and warrants. Our visual information from the high-resolution imagery allows for better understanding of entry and exit points, topography, and structural factors such as building height, width, and depth, allowing for optimum placement of officers during operations.



Primary applications:

- Traffic control, planning, routing
- Tactical planning
- Visual assessment
- Position key teams
- Planning
- Visual references
- Visual reconstruction for court cases

Primary advantages:

- User friendly, easy to use
- Multiple views of the same address
- Import seamless GIS information effortlessly
- High-resolution imagery
- 3-D capable
- Vertical and horizontal measurements can be done quickly
- Aerial imagery....no lease, no loan, you own



For more information please contact:
Dave Ledgerwood, President
dave@mv-usa.com