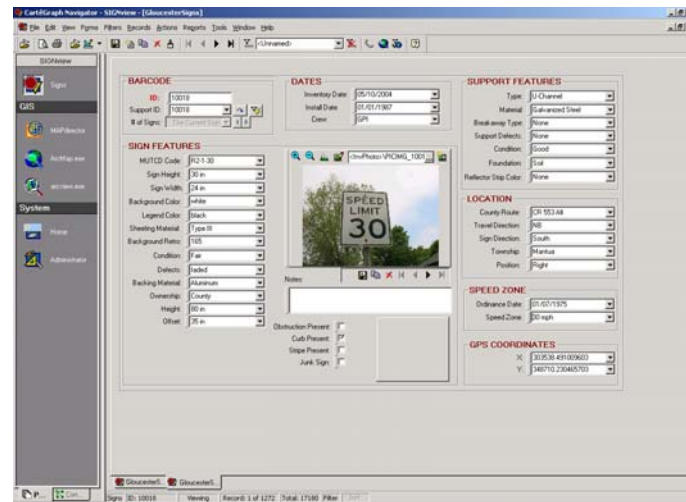


## Gloucester County Sign Management System



**Client:** Gloucester County Engineering Department  
**Project Location:** Clayton, NJ

GPI created a Sign Management System for the Gloucester County Engineering Department along with an accompanying digital roadway videolog to aid the County in prioritizing their signage and roadway needs. The overall intent of this project was to develop a Sign Management System (SMS), Videolog, Work Order System and database for 21,000 signs along 403 miles of County Roadways. The finalized database is being used to continuously assist the County in evaluating, prioritizing, scheduling, and implementing the maintenance, repairs and/or replacement activities of these signs. The SMS is capable of interfacing with an ESRI ArcGIS Geographic Information System. The inventory work included collecting sign and support data related to the MUTCD sign designation, retroreflectivity, sheeting type, GPS and roadway location, dimensions, sign type and material, support type and material, and other pertinent sign information. GPI collected a digital image of each sign. A uniquely numbered weather resistant bar code label was affixed to the back of the sign panel when inventoried. Quality control and assurance reviews were conducted to ensure data completeness. GPI purchased and configured the software and hardware specified in the System Design and Report and provided a focused training program. These training programs enabled Gloucester County staff members to learn, in detail, about the SMS, Work Order System and GIS software. Technical support was provided to answer questions pertaining to the Sign MS.