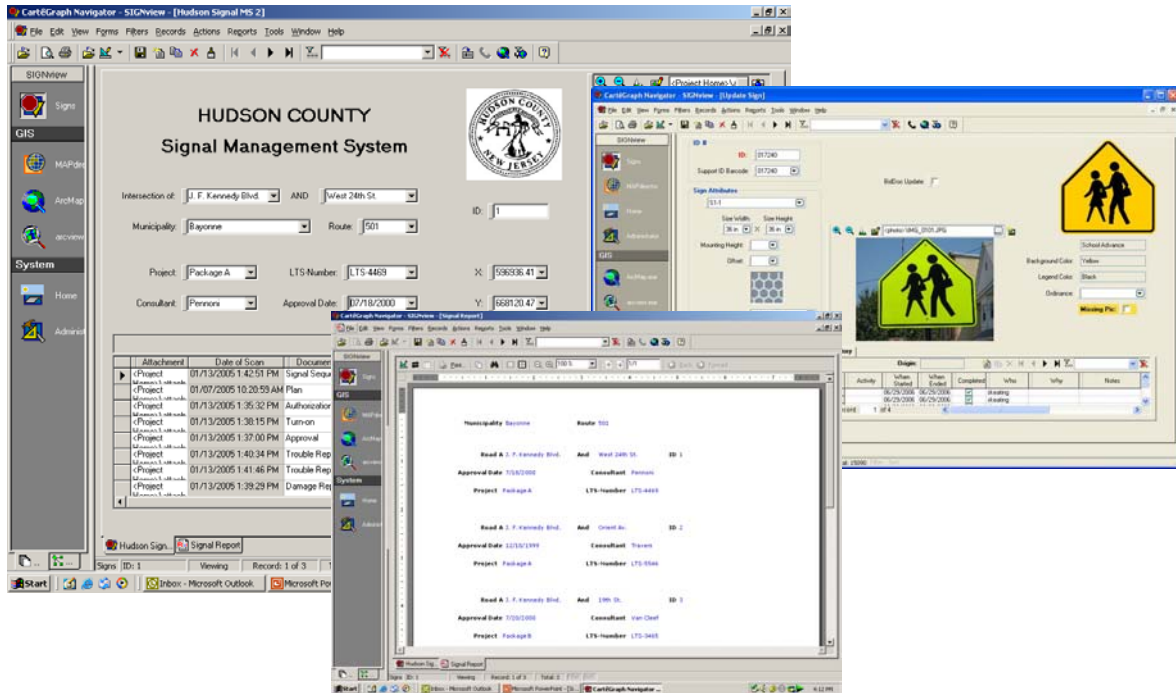


Hudson County Traffic Safety Management System

Asset Management / GIS



Client: Hudson County Engineering Department
Project Location: Secaucus, NJ

GPI completed a Traffic Safety Management System consisting of a Sign Management System and a Signal Management System to aid Hudson County in prioritizing their signage and roadway needs. The project involved inventory of 15,000 warning, regulatory and guide signs and over 300 traffic signals and populating the database software. The inventory work included collecting sign and panel data related to the MUTCD sign designation, retroreflectivity and sheeting type, GPS and roadway location, dimensions, sign type and material, support type and material, and other pertinent sign and signal information. A digital image of each sign was collected. A uniquely numbered weather resistant bar code label was affixed to the back of the sign panel when inventoried. The Signal Management System links scanned images and digital documents relating to each intersection allowing the county to manage this important information in a spatial system. These documents include DOT forms, traffic signal, electrical, operation plans, timing sequence, and other associated information. After the inventory and database development, the Sign and Signal Management systems were integrated into CartêGraph so they can be managed in one comprehensive Traffic Safety Management System.