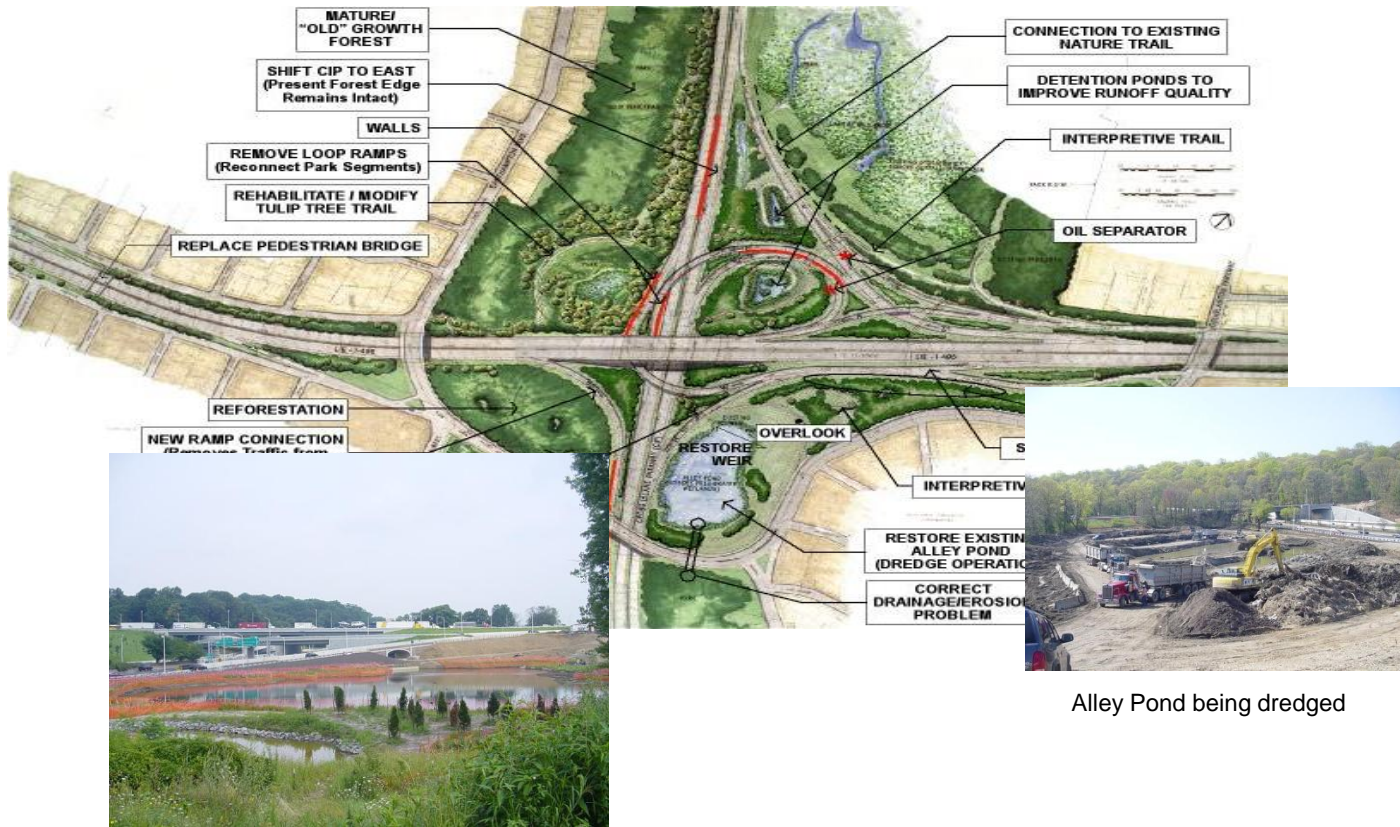


Long Island Expressway/Cross Island Parkway Interchange and Alley Pond Park Rehabilitation



Alley Pond Complete

Alley Pond being dredged

Client/Owner: New York State Dept. of Transportation

Project Location: Queens, NY

Included as part of this \$161-million interchange construction project was the restoration of over 12 acres of New York City parkland. The restoration of the parkland included; the dredging of Alley Pond involving over 65,000 metric tons of material to create an open body of water with over 40,000 native emergent species and bioremediation plantings; The creation of two detention ponds with over 20,000 native emergent species and bioremediation plantings in each; the installation of a 1.1 KM long granite block curbed asphalt recreational trail/path system in within the Park; the installation of a woodchip path to connect the new path system to Alley Pond Park: the construction of four concrete architecturally stained arched pedestrian underpasses; landscaping and plantings to enhance existing vegetation project wide; The reconstruction of park swales in sensitive park areas; the installation of two concrete grass paved access roads; and the installation of new park signs, plaques, benches, and a flag pole. The construction cost associated with the parkland was \$15 million.