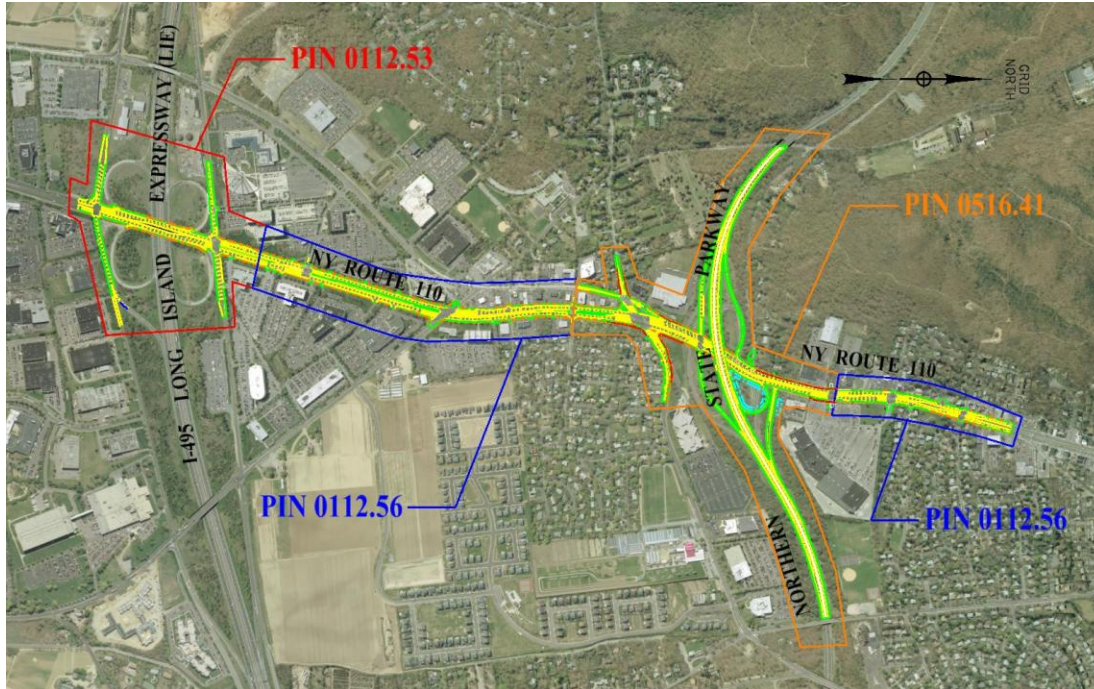


# Northern State Parkway and Long Island Expressway Interchange Improvements at NY 110



**Client/Owner:** New York State Dept. of Transportation

**Project Location:** Town of Huntington, NY

GPI as prime consultant leads our project team consisting of four subconsultants in highway and bridge design phases I-VI of Northern State Parkway/NYS Route 110 Interchange Reconstruction. The project provides for preliminary and final design services (Phase I-VI) for major reconstruction and reconfiguration of the Northern State Parkway (NSP) / NYS Route 110 (Walt Whitman Road) interchange. It includes replacement of the existing Northern State Parkway Bridge over NYS Route 110. In addition the project will widen NYS Route 110 from four to six lanes between the interchange and the North Service Road of the Long Island Expressway (I-495).

Project design included the following: accident analysis, design survey, geotechnical, survey and mapping, ROW mapping, development of a Design Approval Document - Design Report / Environmental Impact Statement, highway design studies, social/economic/and environmental studies, assistance with permits, noise study, air quality study, ecological and endangered species study, surface water identification and evaluation study, federal - jurisdictional wetlands study, surface water quality study, ground water quality study, Section 4(f) evaluation, hazardous waste/contaminated materials screening, hazardous waste/contaminated materials detailed site assessment/final contract plans.

The proposed improvements are being constructed in three phases. The first phase which consisted of improvements at the I-495/NY 110 interchange finished in December 2010. Construction of the second phase, which includes the reconfiguration of the out-dated Northern State Parkway/NY 110 interchange, will begin in the Spring of 2011. The final phase to complete the remaining sections of NY 110 will commence construction in the Fall of 2012.