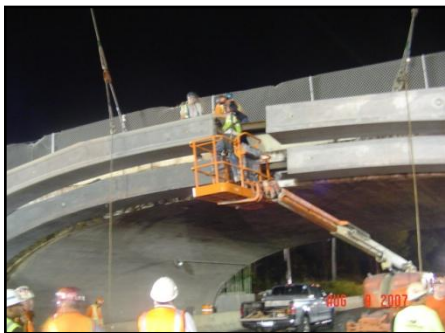


Reconstruction of County Route 3 (Wellwood Avenue) Bridge over Southern State Parkway

2010 ASCE Long Island — Quality of Life Award



Client/Owner: Suffolk County Dept. of Public Works

Project Location: Babylon, NY

This project involved final design services for the widening and rehabilitation of an existing concrete arch bridge that carries County Road 3, Wellwood Avenue, over the Southern State Parkway in the Town of Babylon, Suffolk County, NY. The goals of this project were to provide an acceptable level of service while improving traffic safety and structural integrity within the tight right-of-way constraints imposed by adjacent cemetery land. Efforts included the preparation of an Expanded Project Proposal (EPP) report that documented the development of various geometric improvement alternatives to address capacity, safety and substandard feature deficiencies. All studies and analyses were included within the EPP. A Final Design Approval Document (DAD) and, subsequently, final design plans were then prepared based upon the selected alternative. Tasks included the design survey and development of base mapping; right-of-way survey and mapping; soils investigation; environmental studies including water and air quality, noise analyses, and asbestos assessment; bridge inspection and preparation of inspection reports, bridge inventory and load rating forms; bridge widening plans including the repair of the concrete arch and replacement of waterproofing membrane on top of the arch; drainage improvements and roadway design plans including pavement, bridge and roadway lighting; traffic signalization, signing, and pavement markings; and maintenance and protection of traffic plans for CR 3, the Southern State Parkway and surrounding roadways including any necessary detour plans. GPI also provided construction inspection services.