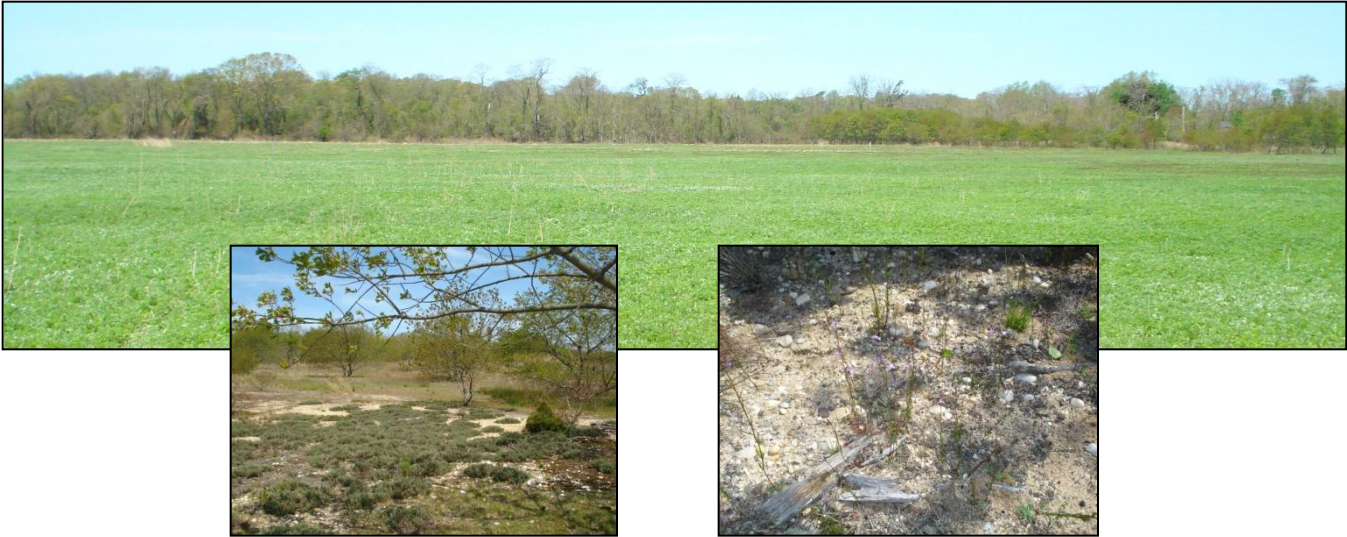

Habitat Restoration Feasibility Study for the Robinson Duck Farm County Park



Client: Suffolk County Dept. of Planning

Project Location: South Haven, Suffolk County, NY

The former Robinson Duck Farm is located south of Montauk Highway, west of the Carmans River and north of the MTA LIRR right-of-way in South Haven. The Suffolk County parkland holding totals 86.9 acres.

The Robinson Duck Farm (sometimes referred to as the “Carman River Duck Farm”) produced many millions of ducks during the period from about 1923 until its closure in 1984. Two-hundred thousand ducks per year were produced during the mid-1960s. On the order of 40 structures were located on the farm during the peak of its operation. The environmental impacts of duck farm operation at the site were significant (woodland converted into pens and open feedlots; land surface elevation and hydrological modifications for water flow/control in the riparian transition zone to create swim pond areas for duck use, and to convey duck effluent to waste disposal lagoons; surface water quality degradation). Adverse offsite impacts on water quality in the Carmans River were also present due to the discharge of duck wastes.

Characteristics and conditions at the site today include: remains of dilapidated buildings; piles of debris; old equipment and machinery; duck pen fencing; earthen embankments/waste disposal lagoons, associated structures and piping; dense stands of invasive *Phragmites* in former swim ponds and waste disposal lagoons adjacent to the Carmans River; potential stagnant water; and old field type vegetation.

The Robinson Duck Farm County Park Habitat Restoration Feasibility Study will enable Suffolk County to conduct the necessary work to inventory site conditions, assess restoration opportunities and develop a recommended habitat restoration plan. GPI is providing consulting services for this project. Tasks include the following:

- Task 1: Inventory and map site conditions;
- Task 2: Identify environmental conditions;
- Task 3: Conduct Phase II environmental site analysis;
- Task 4: Describe past and current management activities,
- Task 5: Develop management goals and restoration priorities;
- Task 6: Prepare Park Management and Habitat Restoration Report;
- Task 7: Meetings